

SHIMON

WHERE VISION MEETS VICTORY!



TR90 Frames: Lightweight and Durable

Our sunglasses frames are crafted from **TR90 material**, a thermoplastic polymer renowned for its **lightweight, flexible, and durable** properties. TR90 frames are incredibly comfortable, even for all-day wear, as they conform gently to your face without causing pressure. Their flexibility ensures resistance to bending or breaking, making them ideal for both active and everyday use. Plus, TR90 is hypoallergenic, making it safe for sensitive skin.



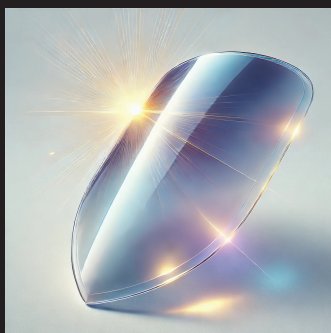
Polycarbonate Lenses: Lightweight and Impact-Resistant

Sunglasses with **polycarbonate lenses** offer unparalleled **durability and safety**. These lenses are incredibly lightweight, making them comfortable for extended wear. Despite their lightness, polycarbonate lenses are highly impact-resistant, providing excellent protection against accidental drops or bumps. Their scratch-resistant coating ensures clear vision over time, making them perfect for both daily use and outdoor adventures.



Polarised Lenses: Reduced Glare and Enhanced Clarity

Polarised lenses are engineered to reduce glare from reflective surfaces such as water, snow, or roads, providing **crystal-clear vision and reduced eye strain**. These lenses enhance contrast and color clarity, making them ideal for activities like driving, fishing, or skiing. With polarised sunglasses, you'll experience sharper vision and less fatigue, even in the brightest sunlight.



UV420 Protection: Advanced Eye Safety

Our lenses feature **UV420 protection**, shielding your eyes from **both UVA and UVB rays**, as well as harmful high-energy visible (HEV) light. This advanced level of protection helps reduce the risk of eye conditions such as cataracts and macular degeneration, while also minimizing blue light exposure for added comfort. UV420 lenses ensure your eyes remain safe, healthy, and fatigue-free, even on the sunniest days.



Adjustable and Non-Slip Nose Pads and Temples

Designed for **comfort and stability**, our sunglasses come equipped with **adjustable, non-slip rubber nose pads and temples**. These features provide a custom fit for any face shape, preventing discomfort or slippage during wear. The rubber material ensures a secure grip, even during active movement or in warm conditions, making these sunglasses ideal for both everyday and athletic use.



MODEL: KC 0102 C1
Price: £105.00



MODEL: KC 0102 C2
Price: £105.00



MODEL: KB 0101 C1
Price: £105.00



MODEL: KB 0101 C2
Price: £105.00



MODEL: JDSY 028 C1
Price: £105.00



MODEL: JDSY 028 C2
Price: £105.00



MODEL: KC 0101 C1
Price: £105.00



MODEL: KC 0101 C4
Price: £105.00



MODEL: KC 0101 C3
Price: £105.00



MODEL: KC 0101 C6
Price: £105.00

SHIMON | WHERE VISION MEETS VICTORY!



MODEL: KC 0204 C2
Price: £105.00



MODEL: KC 0204 C1
Price: £105.00



MODEL: JDSY 127 C1
Price: £105.00



MODEL: JDSY 127 C3
Price: £105.00



MODEL: JDSY 134 C1
Price: £105.00



MODEL: JDSY 134 C4
Price: £105.00



MODEL: JDSY 180 C2
Price: £105.00



MODEL: JDSY 180 C3
Price: £105.00



MODEL: JDSY 180 C1
Price: £105.00



MODEL: KA 101 C8
Price: £105.00



MODEL: KA 101 C10
Price: £105.00



MODEL: KA 101 C1
Price: £105.00



MODEL: KA 0203 C6
Price: £105.00



MODEL: KA 0203 C1
Price: £105.00



MODEL: KA 0203 C10
Price: £105.00



MODEL: KB 0102 C1
Price: £105.00



MODEL: KB 0102 C2
Price: £45.00



MODEL: KA 0306 C5
Price: £45.00



MODEL: KA 0306 C7
Price: £45.00



MODEL: KA 0306 C6
Price: £45.00

SHIMON | WHERE VISION MEETS VICTORY!



MODEL: JDSY 131 C3
Price: £45.00



MODEL: JDSY 131 C1
Price: £45.00



MODEL: JDSY 134 C2
Price: £45.00



MODEL: KC 0203 C5
Price: £45.00

SHIMON | WHERE VISION MEETS VICTORY!



MODEL: JDSY 037 C1
Price: £45.00